

NATURAL PRECAST CONCRETE  
PANEL (FOR COMPARISON ONLY NOT  
A PART OF MATERIAL PALLET)

C1 OFF WHITE PRECAST  
CONCRETE PANEL

**C2 BLACK STAINED  
PRECAST CONCRETE PANEL**

**C3 TEXTURED BLACK  
PRECAST CONCRETE PANEL**

G1 / G2 / G6 SHOPFRONT GLAZING  
G7 GLASS LOUVRES

**G3 / G4 / G5 ANODIZED ALUMINIUM WINDOW  
FRAME**

**M1 ANODISED ALUMINUM SUN HOOD**

**M2 ANODISED SUN SCREEN TO BALCONY**

### M3 COMPOSITE ALUMINIUM CLADDING OVER STEEL FRAME

**M4 / M5 POWDERCOATED ALUMINIUM  
VENTILATION GRILLE**

**M6 POWDERCOATED ALUMINIUM  
LOUVRES**

**T1 COMPOSITE TIMBER SOFFIT LINING**

## T2 COMPOSITE TIMBER WALL CLADDING

**CP COLOURED PANEL  
BUILDING A**

BUILDING B

BUILDING C

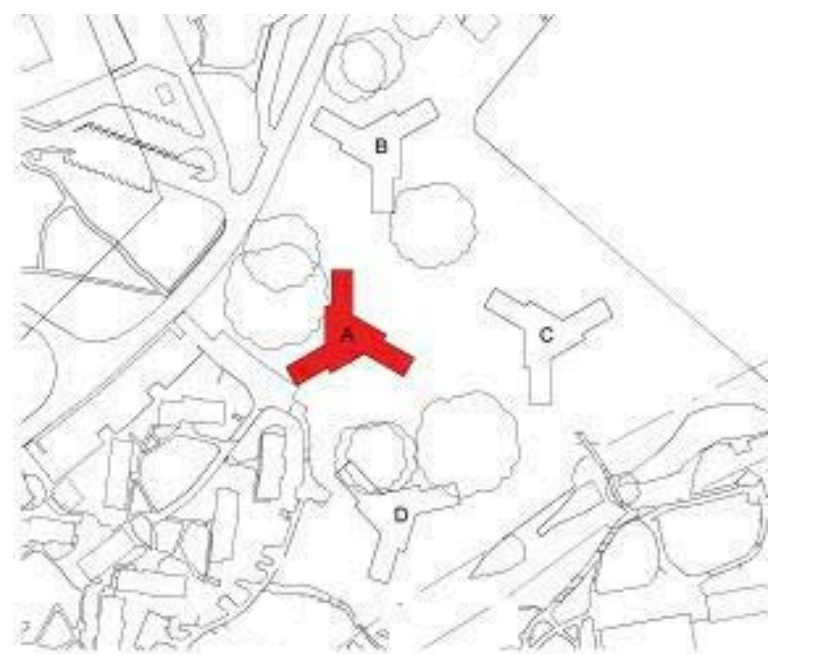
BUILDING D

REFER TO DA 2010 & DA2011 OVERALL  
ELEVATIONS FOR VARIOUS GROUND  
FLOOR CONDITION

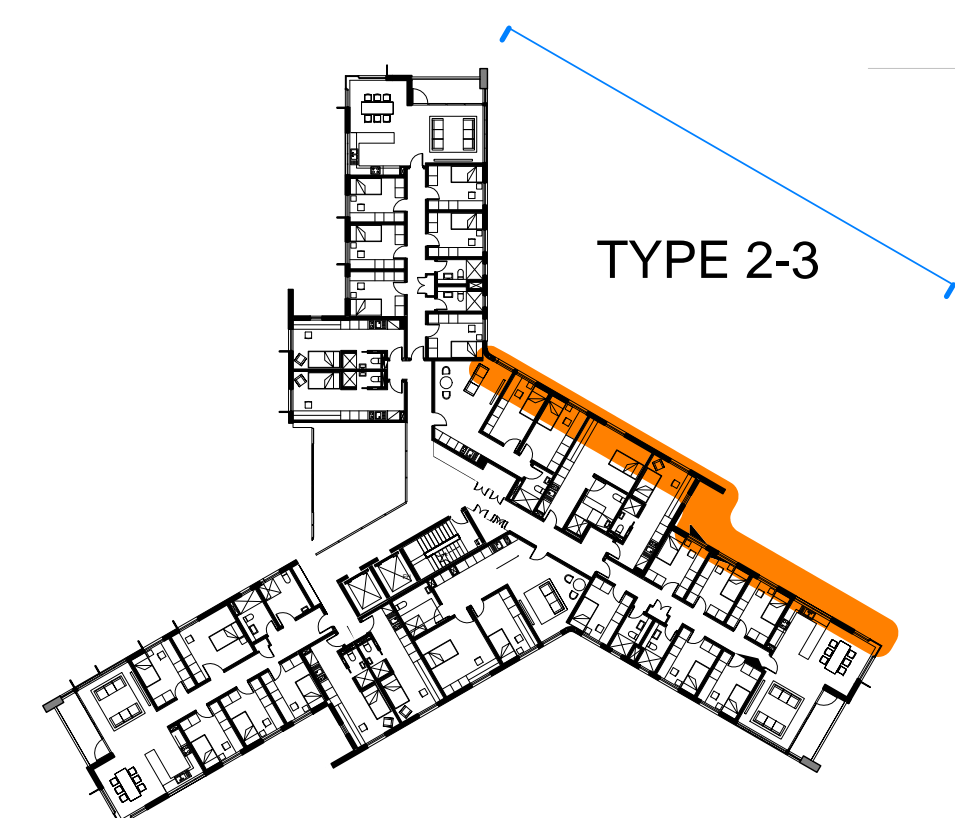
Architectus Sydney Pty Ltd is the owner of the copyright subsisting in these drawings, plans, designs and specifications. They must not be used, reproduced or copied, in whole or in part, nor may the information, ideas and concepts therein contained (which are confidential to Architectus Sydney Pty Ltd) be disclosed to any person without the prior written consent of that company.

**Do not scale drawings. Verify all dimensions on site**

issue	amendment	date
-	DRAFT DA	05.08.2011
A	ISSUE FOR CLIENT FINAL REVIEW	15.08.2011
B	ISSUE FOR DEVELOPMENT APPLICATION	22.08.2011
C	ISSUE FOR DEVELOPMENT APPLICATION	31.08.2011

[illegible]

## KEY PLAN



architectus™

**Architectus Sydney**  
Level 3 341 George Street  
Sydney NSW 2000  
**T (61 2) 8252 8400**  
F (61 2) 8252 8600  
sydney@architectus.com.au

**Sydney**  
Melbourne  
Auckland  
Brisbane  
Shanghai

ABN 11 098 489 448

---

client

THE UNIVERSITY OF  
**NEWCASTLE**  
AUSTRALIA

---

project

Student Accommodation and  
Car Parking

drawing

Detailed Elevations - Accommodation  
Type 2-3

scale	As indicated @ A1	drawing no.	DA4013
drawn	LW		
checked	RG	issue	C
project no	100261		

30/08/2011 10:39:44 PM DEVELOPMENT APPLICATION



1 Type 2-3 Elevation  
1 : 100